

Frankincense Essential Oil

Lot Number: 163218

Date Filled: 11/16/16

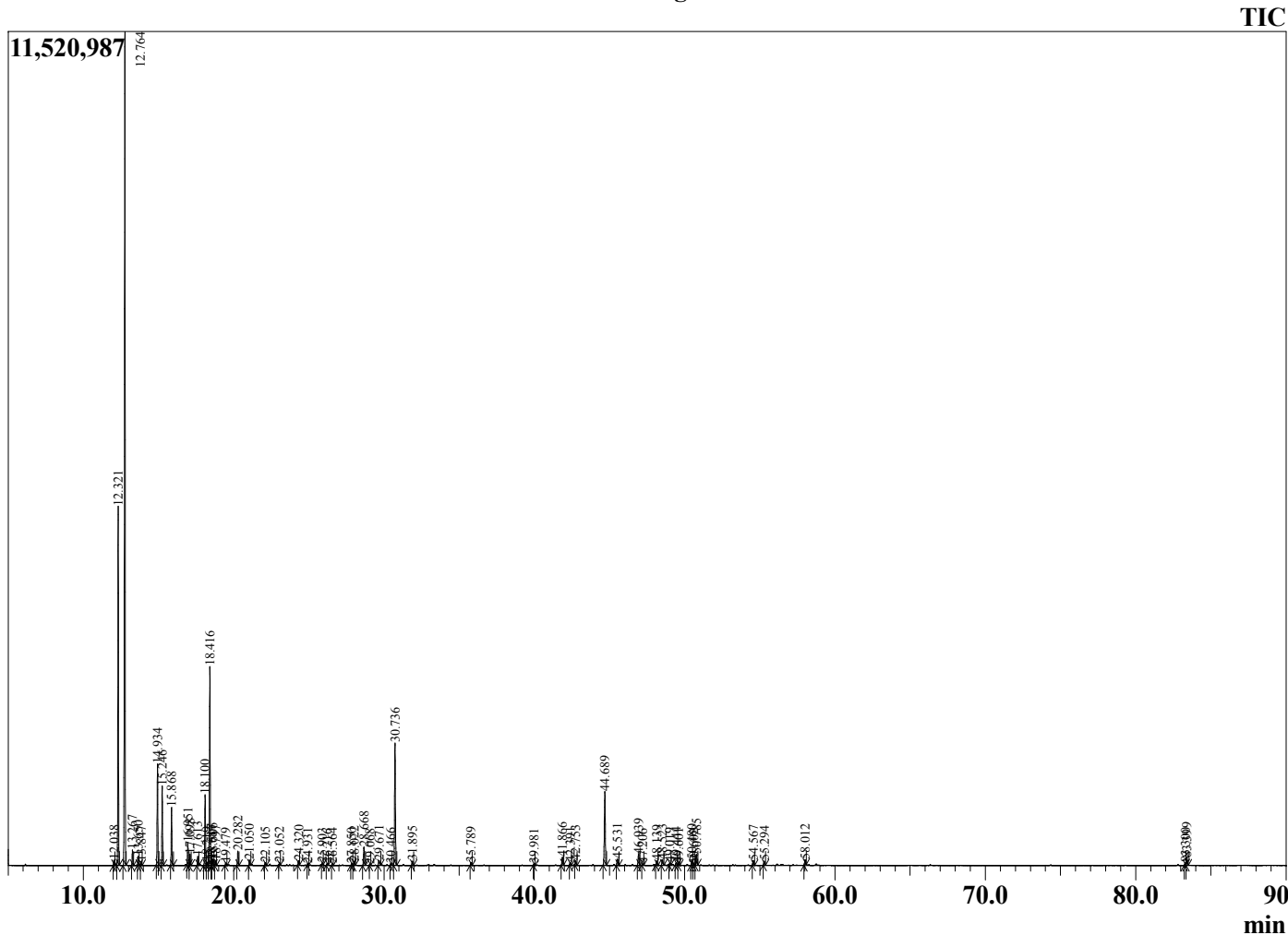
Analyst: AC



Peak Report

| Ret. Time | Compound Name | Area % |
|-----------|------------------------------|--------|
| 12.038 | Hashishene | 0.20 |
| 12.321 | alpha-Thujene | 14.49 |
| 12.764 | alpha-Pinene | 38.49 |
| 13.267 | Thujadiene isomer | 0.61 |
| 13.650 | Camphene | 0.38 |
| 13.847 | Thuja-2,4(10)diene | 0.16 |
| 14.934 | Sabinene | 4.29 |
| 15.246 | beta-Pinene | 3.41 |
| 15.868 | Myrcene | 2.51 |
| 16.951 | alpha-Phellandrene | 1.00 |
| 17.098 | delta-3-Carene | 0.49 |
| 17.613 | alpha-Terpinene | 0.41 |
| 18.100 | para-Cymene | 3.29 |
| 18.219 | Octyl methyl ether | 0.17 |
| 18.416 | Limonene | 9.34 |
| 18.517 | beta-Phellandrene | 0.25 |
| 18.606 | 1,8-Cineole | 0.29 |
| 18.797 | cis-beta-Ocimene | 0.20 |
| 19.479 | trans-beta-Ocimene | 0.11 |
| 20.282 | gamma-Terpinene | 0.67 |
| 21.050 | n-Octanol | 0.26 |
| 22.105 | Terpinolene | 0.13 |
| 23.052 | Linalool | 0.12 |
| 24.320 | trans-Thujone | 0.23 |
| 24.931 | alpha-Campholenal | 0.06 |
| 25.903 | trans-Pinocarveol | 0.09 |
| 26.216 | trans-Verbenol | 0.08 |
| 26.564 | Frankincense monoterpeneol 1 | 0.08 |
| 27.850 | Frankincense monoterpeneol 2 | 0.10 |
| 28.022 | para-Mentha-1,5-dien-8-ol | 0.21 |
| 28.668 | Terpinen-4-ol | 0.99 |
| 29.068 | para-Cymen-8-ol | 0.05 |
| 29.671 | alpha-Terpineol + Myrtenol | 0.31 |
| 30.466 | Verbenone | 0.10 |
| 30.736 | Octyl acetate | 6.54 |
| 31.895 | Decyl methyl ether | 0.23 |
| 35.789 | Bornyl acetate | 0.15 |
| 39.981 | alpha-Cubebene | 0.07 |
| 41.866 | alpha-Copaene | 0.45 |
| 42.391 | alpha-Bourbonene | 0.14 |
| 42.753 | beta-Elementene | 0.22 |
| 44.689 | beta-Caryophyllene | 4.26 |
| 45.531 | trans-alpha-Bergamotene | 0.37 |
| 46.939 | alpha-Humulene | 0.65 |
| 47.206 | Alloaromadendrene | 0.07 |
| 48.139 | trans-Cadina-1(6),4-diene | 0.24 |
| 48.523 | Germacrene D | 0.33 |
| 49.019 | beta-Selinene | 0.12 |
| 49.444 | alpha-Selinene | 0.14 |
| 49.601 | alpha-Murolene | 0.11 |
| 50.480 | gamma-Cadinene | 0.31 |
| 50.602 | Cubedol | 0.07 |
| 50.785 | delta-Cadinene | 0.62 |
| 54.567 | Caryophyllene oxide | 0.28 |
| 55.294 | Viridiflorol | 0.22 |
| 58.012 | tau-Cadinol | 0.28 |
| 83.300 | Incensole | 0.13 |
| 83.399 | Serratol | 0.43 |
| | | 100.00 |

Chromatogram



Comments: The analysis of this Frankincense batch sample meets the expected chemical profile for authentic essential oil of *Boswellia*. No contamination or adulteration was detected.

Approved:

Dr. Robert S. Papp

©Copyright 2016 by Essential Oil University. All rights reserved. Any publishing, copying, use, dissemination, or distribution of this report, including online, without the express written permission of Essential Oil University is strictly prohibited.